



**Plug&Share™
Wireless Router
54 Mbps 802.11g**

6800G

Quick Start Guide



Copyright © 2003 Advanced American Telephones. All Rights Reserved.
AT&T and the Globe Design are trademarks of AT&T Corp., licensed to Advanced
American Telephones. All marks are trademarks of their respective corporations.

See your User Manual for more information

This Quick Start Guide will help you get your new wireless router installed and configured for basic use. To make full use of your new router's capabilities, see the **User Manual** on your CD-ROM for more detailed information on topics such as:



- How to share files and printers with other computers on your network
- How to use parental controls and enhanced security features
- How to use a networked computer to host your own web site or FTP site
- How to run games requiring multiple connections
- How to backup and restore router settings

Directions

Insert CD-ROM, wait for this screen to appear, then click **User Manual**.

Contents

- User Manual
- Quick Start Guide
- Safety/Warranty



Copyright © 2003 Advanced American Telephones. All Rights Reserved.
AT&T and the Globe Design are trademarks of AT&T Corp., licensed to Advanced American Telephones.
All marks are trademarks of their respective corporations.

Table of Contents

Table of Contents

GETTING STARTED4
 About your new wireless network router4
 Package contents5
 System requirements5
 Router installation.....6

THE SETUP WIZARD7
 Set Internet connection type8
 Set Dynamic IP address8
 Set PPPoE9
 Set Static IP address9
 Wireless LAN connection screen.....10
 Security Wizard: Set Admin password11
 Security Wizard: Set WEP encryption11
 Close Wizard12
 Test connections13

INDICATOR LIGHTS & CONNECTIONS14
 Router indicator lights14
 Router controls & connections14

IMPORTANT!

Use only the AC power adapter provided with the product. Do not attempt to use any other AC power adapter. If you need a replacement, please call 1-877-800-5400.

AT&T offers a full line of data networking and broadband accessories.

Please visit us at

www.plugandshare.att.com

1-877-800-5400

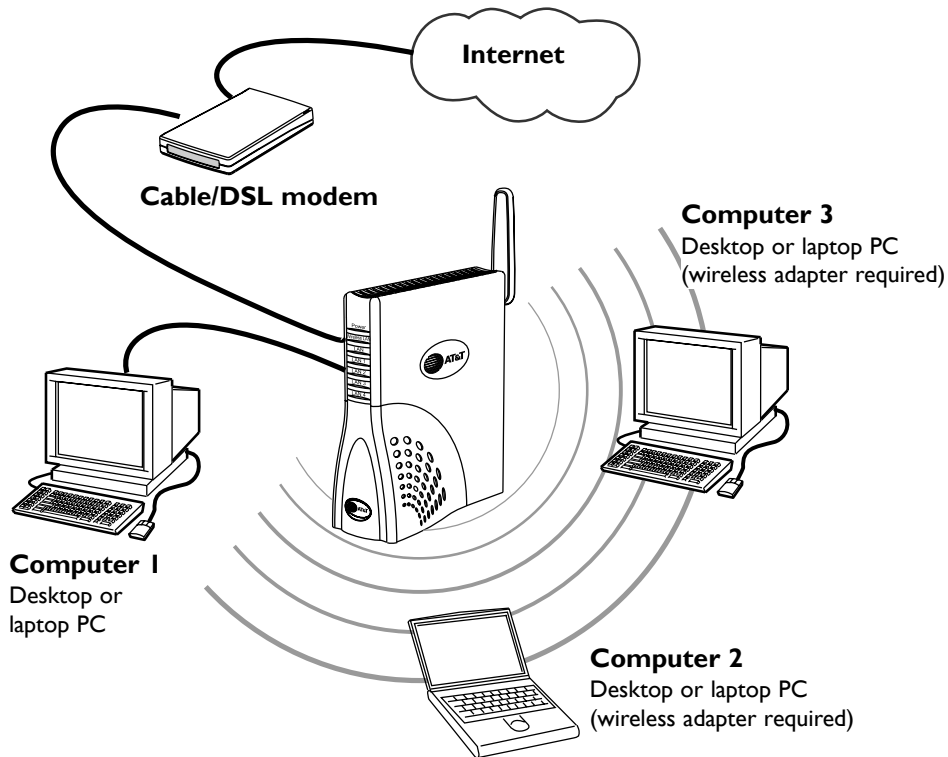
Getting Started

About Your New Wireless Router

Your new AT&T Plug&Share™ Wireless Router gives you the freedom to share files, programs, storage devices, printers and even broadband Internet access among all the computers in your network — without the inconvenience and expense of a tangle of network cabling.

Designed for fast, easy setup and use, your new router transfers data at up to 54 Mbps (megabits per second). Built-in “firewall” capabilities help keep your network secure and protect your privacy.

Before you begin, please see the next page to check package contents and system requirements. Then follow the step-by-step directions to install and configure the router for optimum performance on your network.

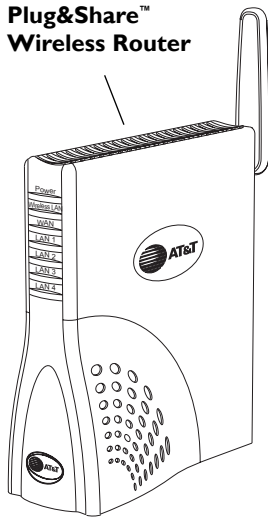


Getting Started

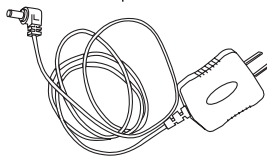
Package Contents

Please check to make sure your package contains the following items:

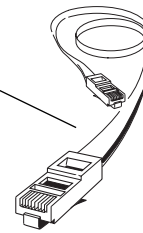
**Plug&Share™
Wireless Router**



Power adapter



**RJ45
Ethernet
cable**

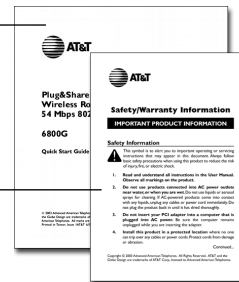


**Quick
Start Guide**

**Safety &
Warranty
Information**



CD-ROM



System Requirements

You must have a personal computer with the following applications & hardware:

- Windows® 98 SE, Me, 2000 or XP
- Internet Explorer® 5.5 or later version
- Intel® Pentium II (or higher)
- 64MB of RAM
- CD-ROM drive
- 10/100 Base-T Ethernet Port
- 5 MB of available hard-disk space (60 MB to load Adobe® Acrobat® Reader®)
- Cable modem or DSL modem with Broadband Service

Getting Started

Step 1: Verify Internet access

Before you begin, launch your web browser to make sure you can connect to the Internet. If you cannot connect to the Internet, check your modem connections, consult the User Manual provided by your broadband service supplier, or call your Internet service provider for assistance. You must have Internet access before installing the router.

Step 2: Install router

1 Connect power adapter

Connect the power adapter to the router, then plug it into an electrical outlet not controlled by a wall switch.

2 Connect router to computer

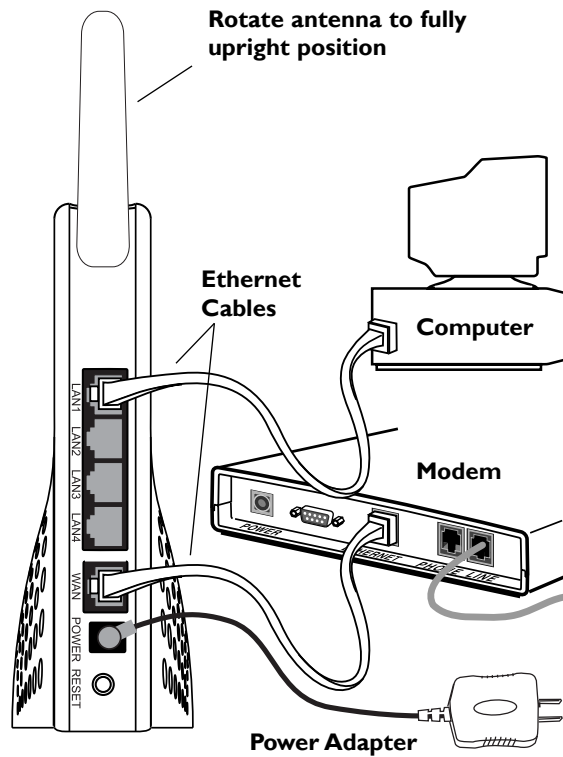
Unplug the Ethernet cable from your modem, then plug it into the **LAN 1** port of the router.

3 Connect router to modem

Use the supplied Ethernet cable to connect the modem to the **WAN port** of the router. WAN stands for Wide Area Network (Internet).

4 Check lights & connections

Before proceeding, make sure all connections match the diagram at right. Check the front of the router to make sure the Power, WAN and LAN1 lights are on (see page 14).



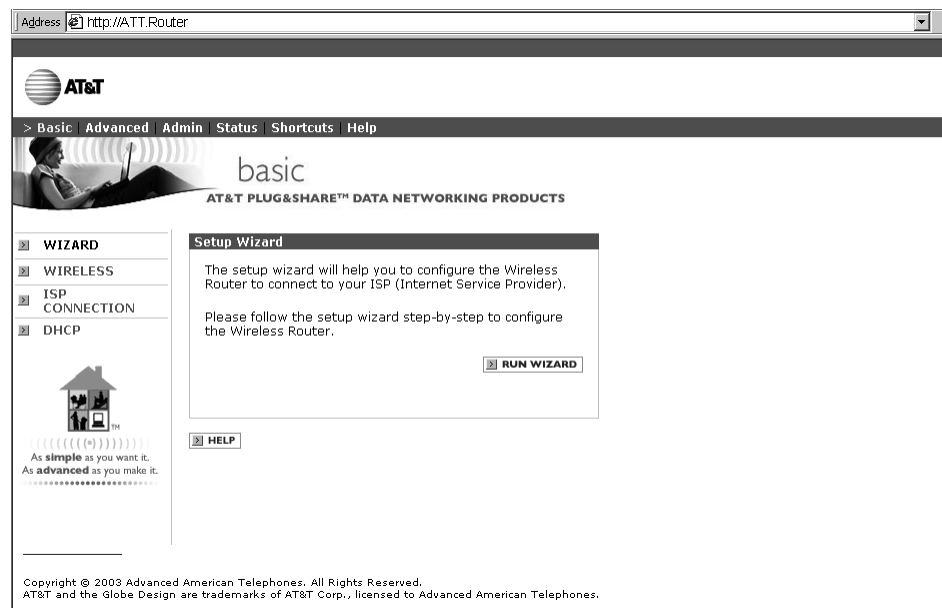
Getting Started

Step 3: Run the Setup Wizard

To configure your router for use, launch your web browser, then follow the steps below.

NOTE: The screens you will see are stored in the router; they are not web site pages. During setup, ignore alerts that prompt you to re-connect to the Internet.

- 1 In the address window, type <http://ATT.Router> (do NOT type www).
- 2 Press **Enter** to display the Wizard screen (below). If this screen does not appear, type <http://192.168.0.1> then press **Enter**.
- 3 Click the **Run Wizard** button to display the Internet Connection Type screen (see next page).



Setup Wizard

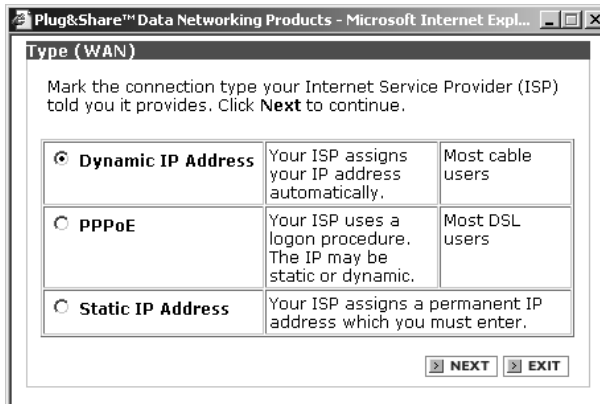
Internet Connection Type

Next, choose an Internet connection type (you will be allowed to choose only one). If you are not sure which to choose, ask your Internet Service Provider. After you make a selection, press **Next** to display a setup screen for the option you've chosen.

Dynamic IP Address: Cable modems usually require this setting. Choose this setting if you don't have to log on to the Internet when you turn on your computer.

PPPoE: DSL modems usually require this setting. Choose this setting if you have to log on to the Internet when you turn on your computer.

Static IP: This setting is rarely required. Contact your ISP before choosing this option.



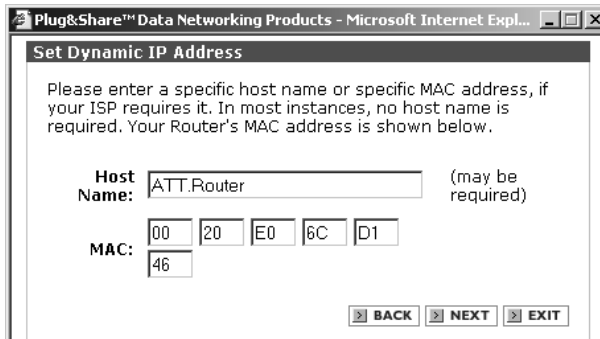
Set Dynamic IP Address

This screen appears if you select Dynamic IP Address as your Internet connection type.

Host Name: If your ISP requires that you enter a host name, enter it here.

MAC (Media Access Control): The address of your computer's network adapter should appear here as the default. It is usually not necessary to change it.

Click **Next** to display the Wireless LAN Connection screen (see page 10).



Setup Wizard

Set PPPoE

This screen appears if you select PPPoE as your Internet connection type.

Enter the user name and password you use for access to your Internet Service Provider.

If your ISP requires you to use a service name, enter it in the last text field.

Click **Next** to display the Wireless LAN Connection screen (see page 10).

Set Static IP Address

This screen appears if you select Static IP Address as your Internet connection type.

Delete anything that appears in these fields when the screen is displayed, then enter the WAN and DNS addresses provided by your ISP.

Click **Next** to display the Wireless LAN Connection screen (see page 10).

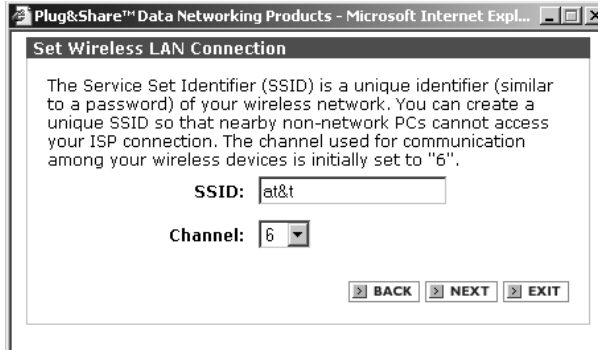
Setup Wizard

Set Wireless LAN Connection

This screen displays the default settings for your wireless network.

SSID (Service Set Identifier) provides security protection. The default SSID is **at&t**. You should change this to any name up to 32 characters long. The SSID is case sensitive (i.e., "cat" and "Cat" are not the same). All wireless network devices must use the same SSID.

Channel: Click to choose any channel from 1 to 11. (Default is 6.) All wireless network devices must use the same channel.



Click **Next** to continue.

Setup completed

Click **Run Security Wizard** to set up enhanced security and privacy protection (see page 11).

Click **Back** if you want to change any settings.

Click **Save Settings** to end the setup session now. (You will then be prompted to verify Internet access.)



Connection problems?

If there is no response when you click your web browser's **Home** button, try the suggestions on page 13.

Setup Wizard

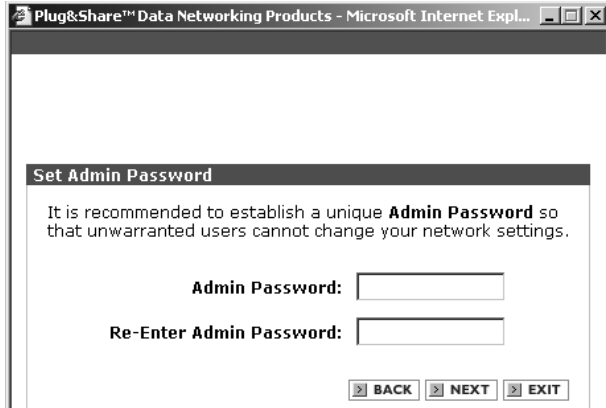
Security Wizard: Set Admin Password

You can protect your network settings by entering a password here. Only those who know the password will be allowed to change network settings.

Enter your password twice. Symbols will replace your key strokes on the screen. The password can be up to 15 characters long. The password is case sensitive (i.e., "cat" and "Cat" are not the same).

Click **Next** to display the WEP Encryption screen (see below).

NOTE: Remember your password. It will be required for access to all router settings.



Set WEP Encryption

WEP (Wired Equivalent Privacy) helps protect your privacy by encrypting wireless data.

WEP: Click **On** to activate WEP.

WEP Encryption: Select encryption strength from the drop down menu (64, 128 or 152-bit). Larger numbers will make your system more secure, but may result in slower data transfer.

Security Phrase: Enter a security phrase. (You must enter five characters for 64-bit, 13 characters for 128-bit, or 16 characters for 152-bit.) Every wireless device on the network must match these WEP settings.



Click **Next** to continue.

Setup Wizard

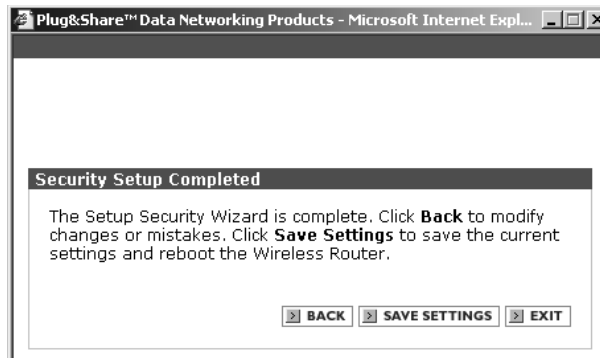
Security setup completed

Your setup is complete. See the User Manual on your CD-ROM to establish additional security protection.

Click **Back** to change any settings.

Click **Save Settings** to end the setup session now. Your router will restart automatically and the Close Wizard screen will appear.

Click **Exit** to return to the current settings.



Close Wizard

Click **Close Wizard** to allow access to advanced administration screens (see the User Manual on your CD-ROM).

To check your Internet connections, click the **Home** button on your Internet web browser at the top of your screen.



Setup Wizard

Test your connections

Click on the icon for your web browser. Your designated home page should appear. If your home page does not appear, try the following:

- Reboot your computer.
- Turn off or unplug your modem for a few seconds, then turn it back on.
- If you still have no Internet access, see the Troubleshooting section in your User Manual (on CD-ROM).

Note: After your initial setup is complete you can use wireless adapters to connect other devices to your network. The Ethernet cable is not necessary, and can be disconnected.

Indicator Lights & Connections

Router Indicator Lights

FRONT OF ROUTER

Power

A steady light indicates that the router is properly connected to the power supply.

Wireless LAN

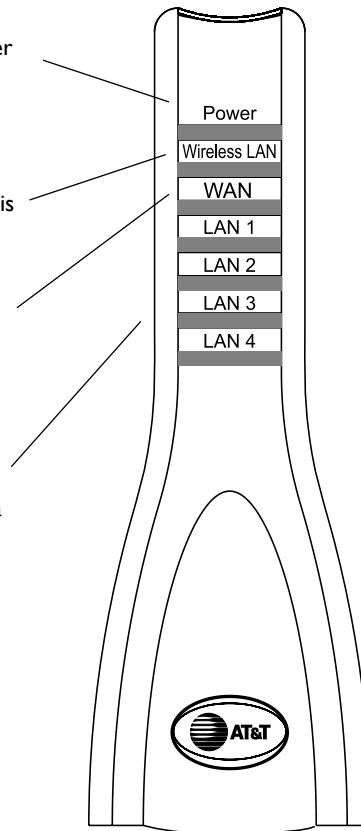
A steady light indicates that the router is functioning properly.

WAN

A steady light indicates the router is properly connected to your modem. The light blinks during data transfer.

LAN1 - LAN 4

A steady light indicates that there is a connection to an Ethernet-enabled computer on one of the ports. The light blinks during data transfer.



Indicator Lights & Connections

Router Controls and Connections

BACK OF ROUTER

LAN Ports 1- 4

RJ45 jacks for cable connections to a local area network. After installation and setup, you will not need cabling to share resources throughout the network.

WAN Port

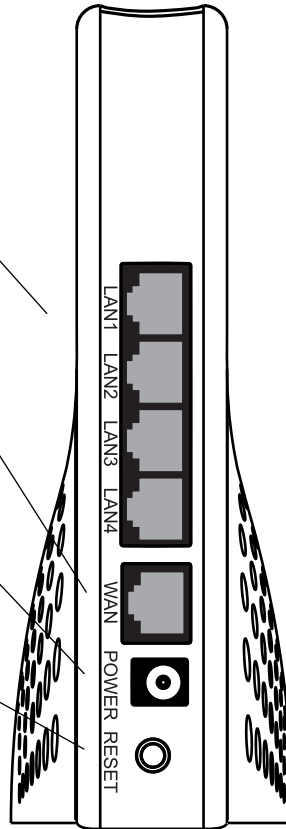
This port provides Internet access when connected to a DSL or cable modem. ("WAN" stands for "Wide Area Network.")

Power

Plug in your power adapter here, then plug it into an electrical outlet not controlled by a wall switch.

Reset button

Press and hold this button for 15 seconds to restore the router to factory programmed default settings. You will have to run the Setup Wizard again if you use this feature (see page 7).





Questions?

Call **1-877-800-5400**

or visit

www.plugandshare.att.com

Copyright © 2003 Advanced American Telephones. All Rights Reserved.
AT&T and the Globe Design are trademarks of AT&T Corp., licensed to Advanced American Telephones. All marks are trademarks of their respective corporations.
Issue 1.2 AT&T 11/06/03

